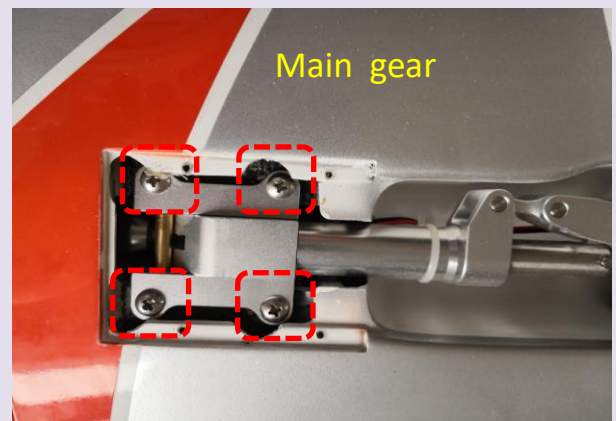
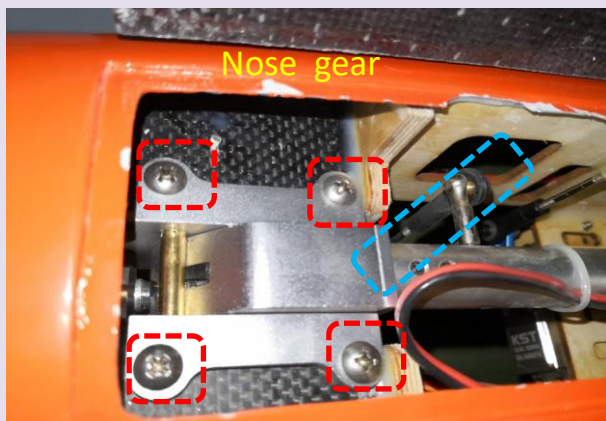
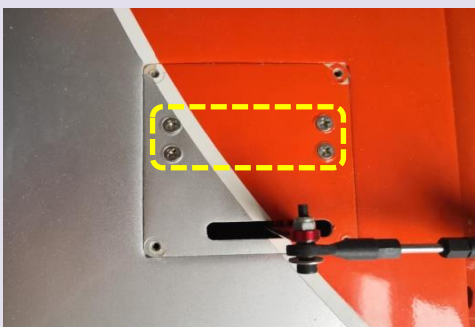
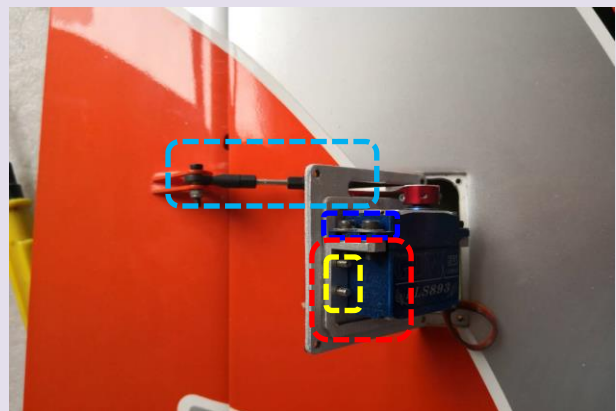
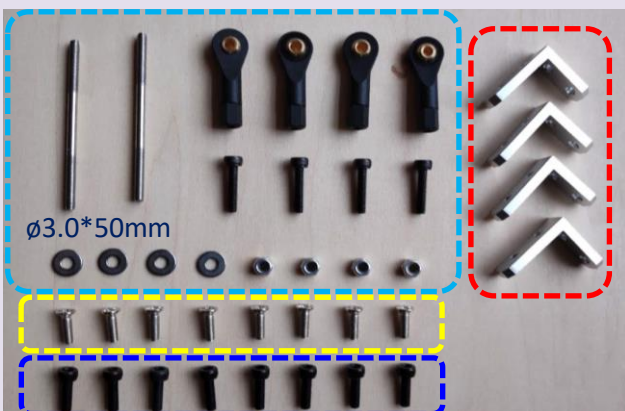


# T1 installation Manual

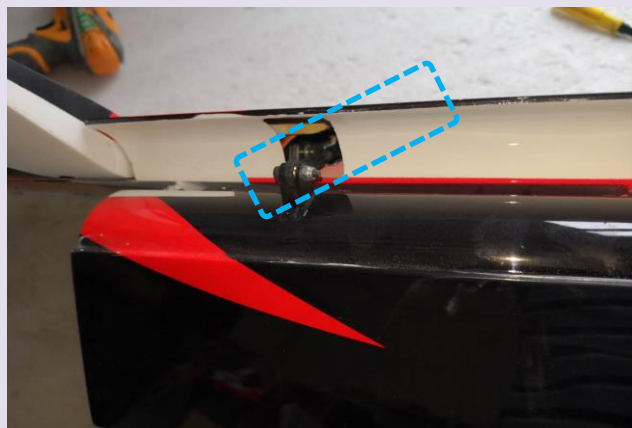
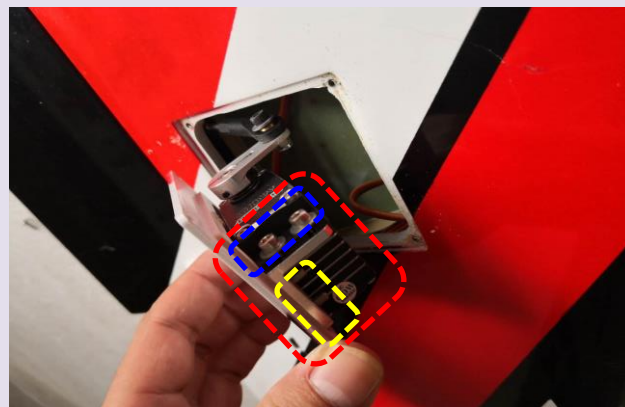
## 1. Landing gear



## 2. Aileron



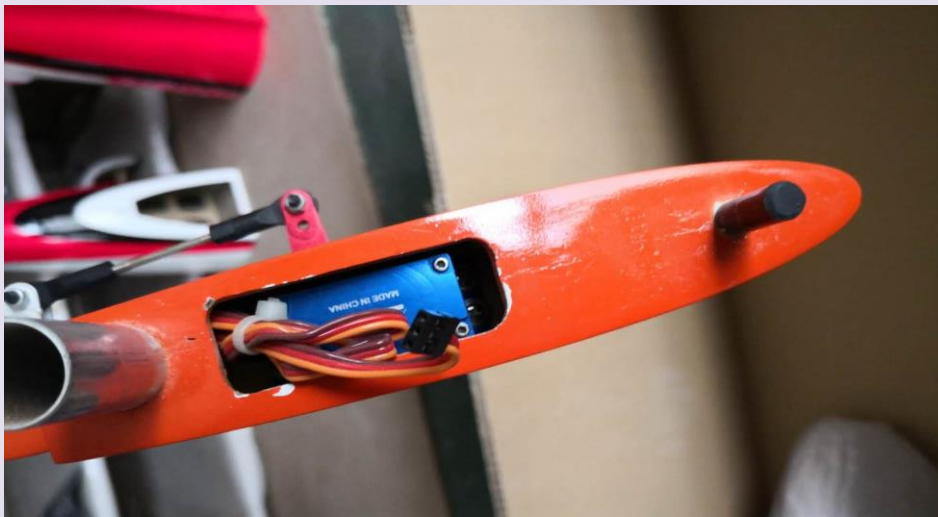
### 3. Flap



### 4. Vertical tail



## 5.Horizontal tail



## 5.Auxiliary screws and tools



Fuselage connect screw

1. Servo cover fixing screw
2. Main gear cover fixing screw
3. Vertical and Horizontal servo fixing screw

## 6.CG & surface parameters

Item	Data
Aileron	$\pm$ 25mm
Flap	50mm, 95mm
Elevator	$\pm$ 20mm
Rudder	$\pm$ 30mm
CG	235mm $\sim$ 245mm